

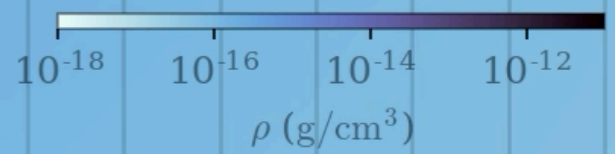
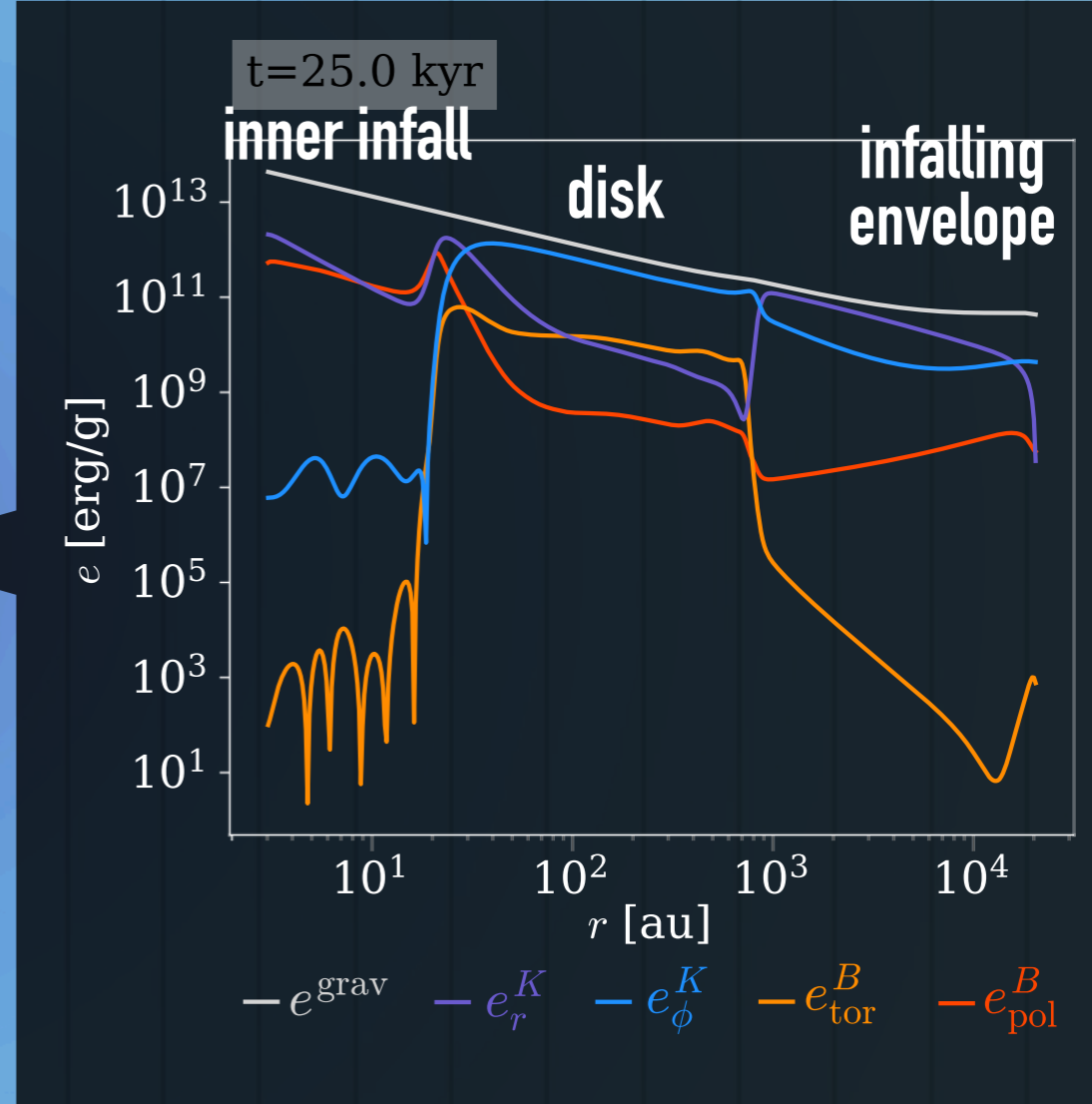
Forming Disk vs. Magnetic Braking

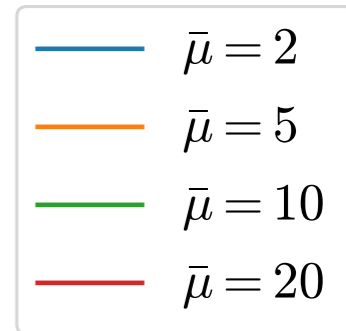
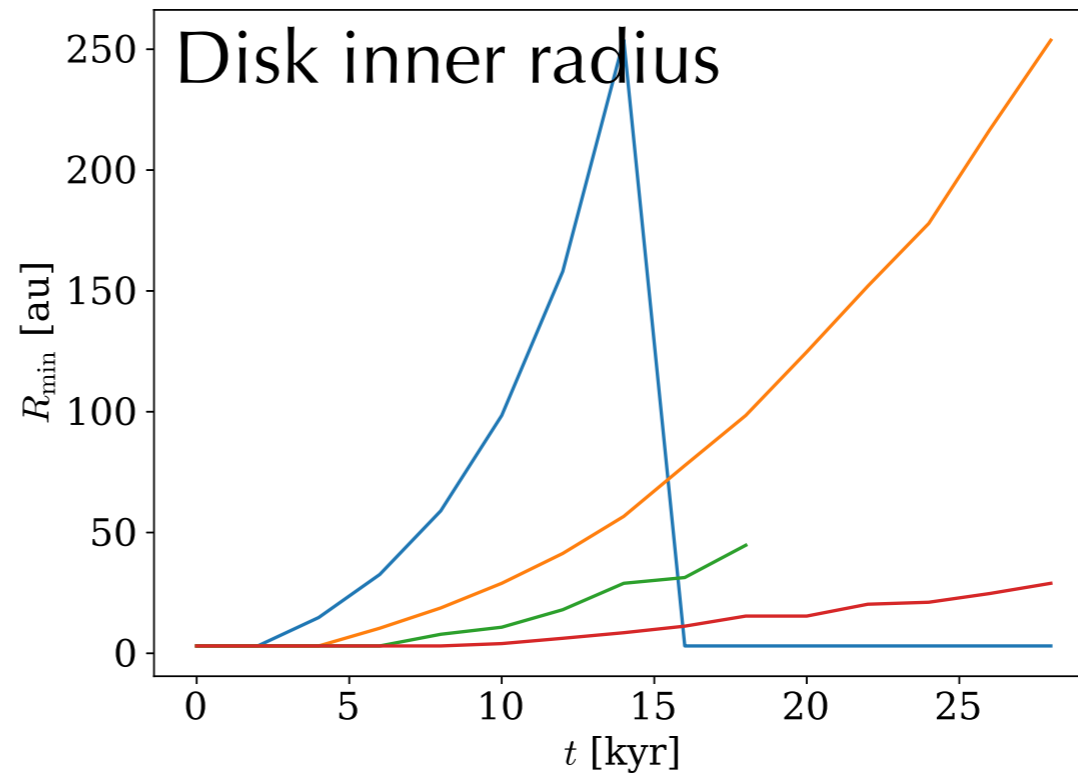
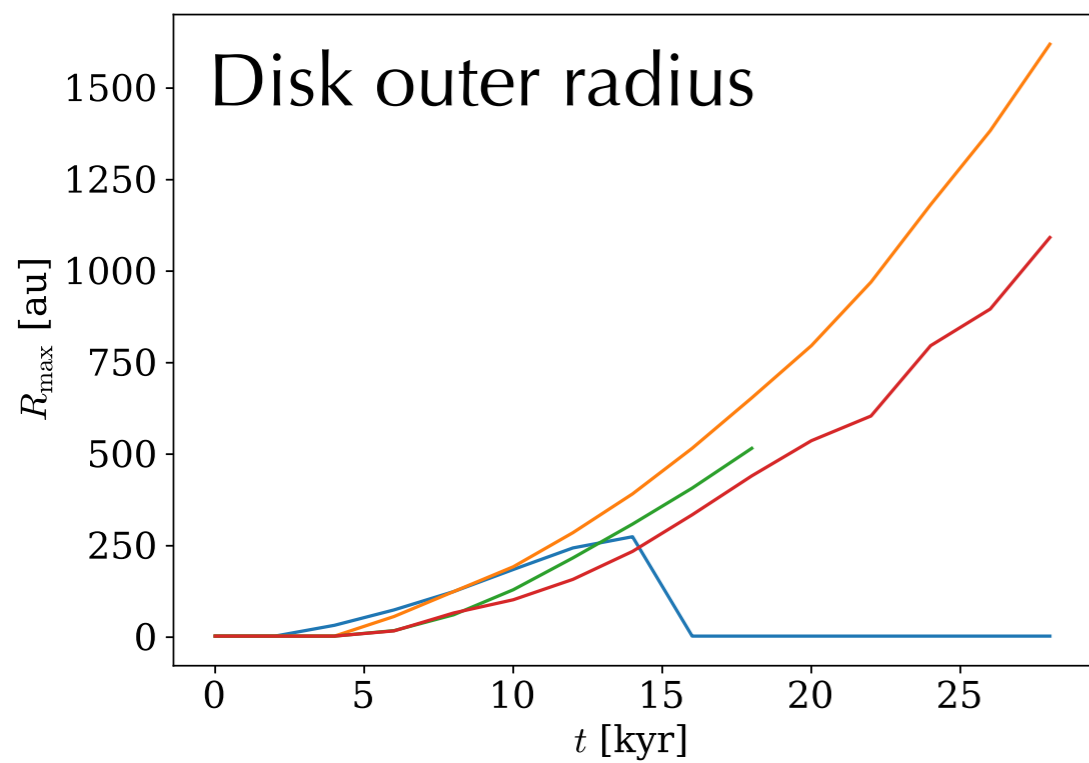
Potential Solutions:

- Magnetic Fields inclined to Angular Momentum Vector
- Turbulence
- Non-ideal MHD
 - Ohmic Dissipation
 - Ambipolar Diffusion
 - Hall Effect

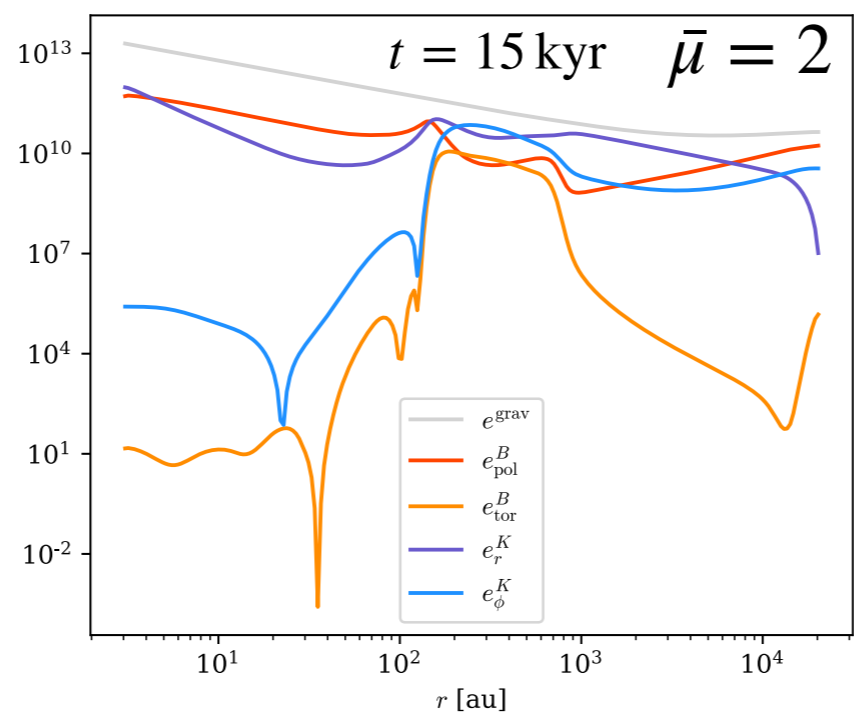
B: _____
v: 10 km/s
100 km/s
1000 km/s

250.0 au t=0.00 kyr



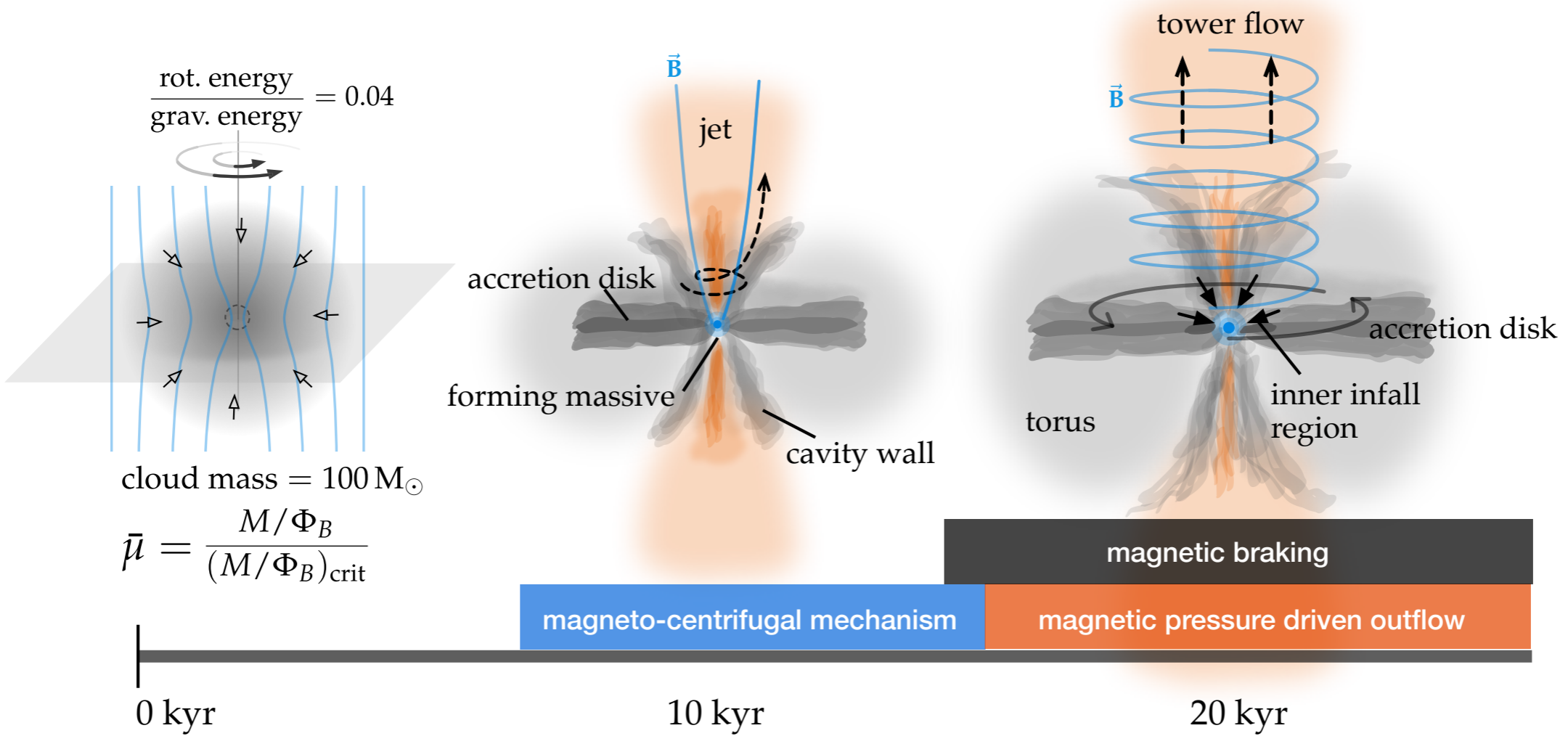


$M_C = 100 M_\odot,$
 $\beta_\rho = -1.5,$
 $\zeta = 0.04, \beta_\Omega = 0,$

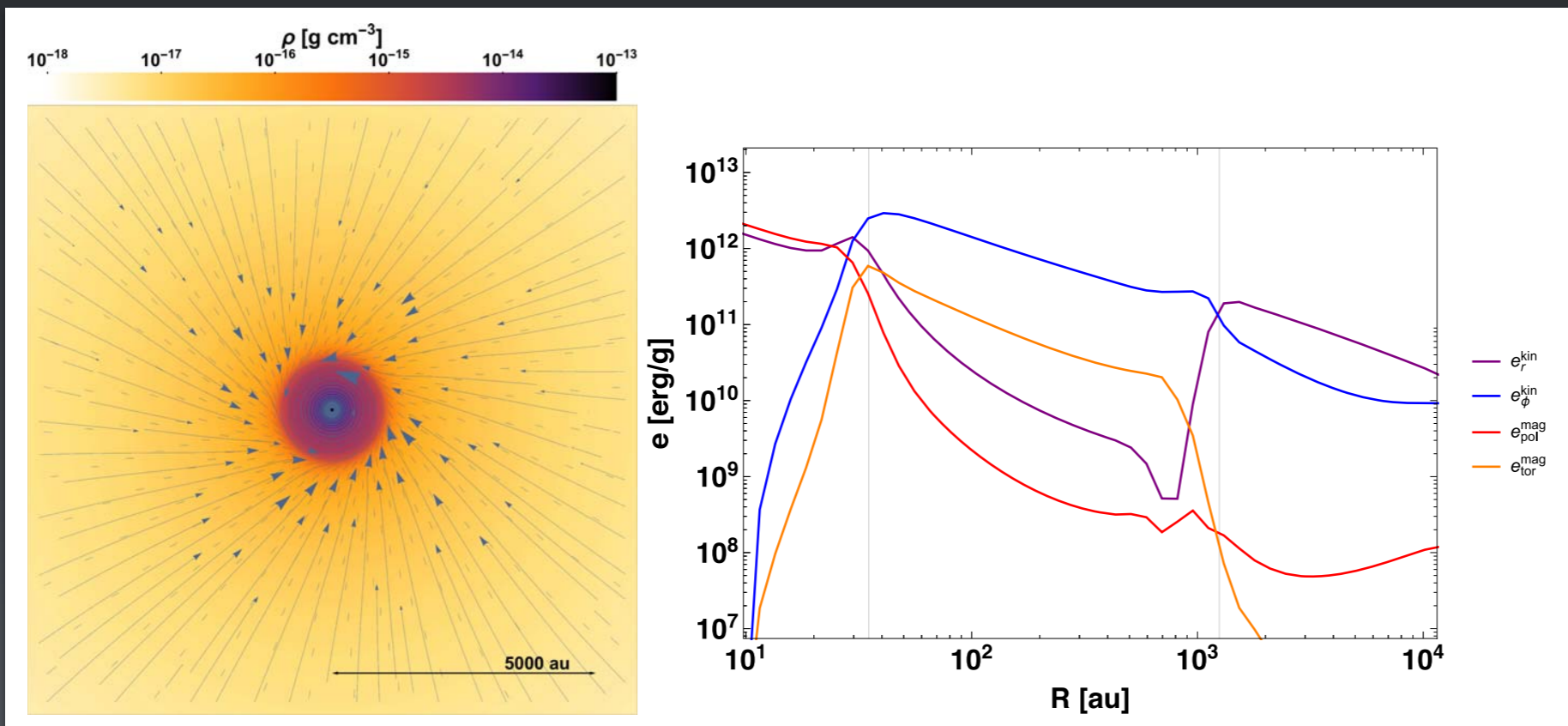
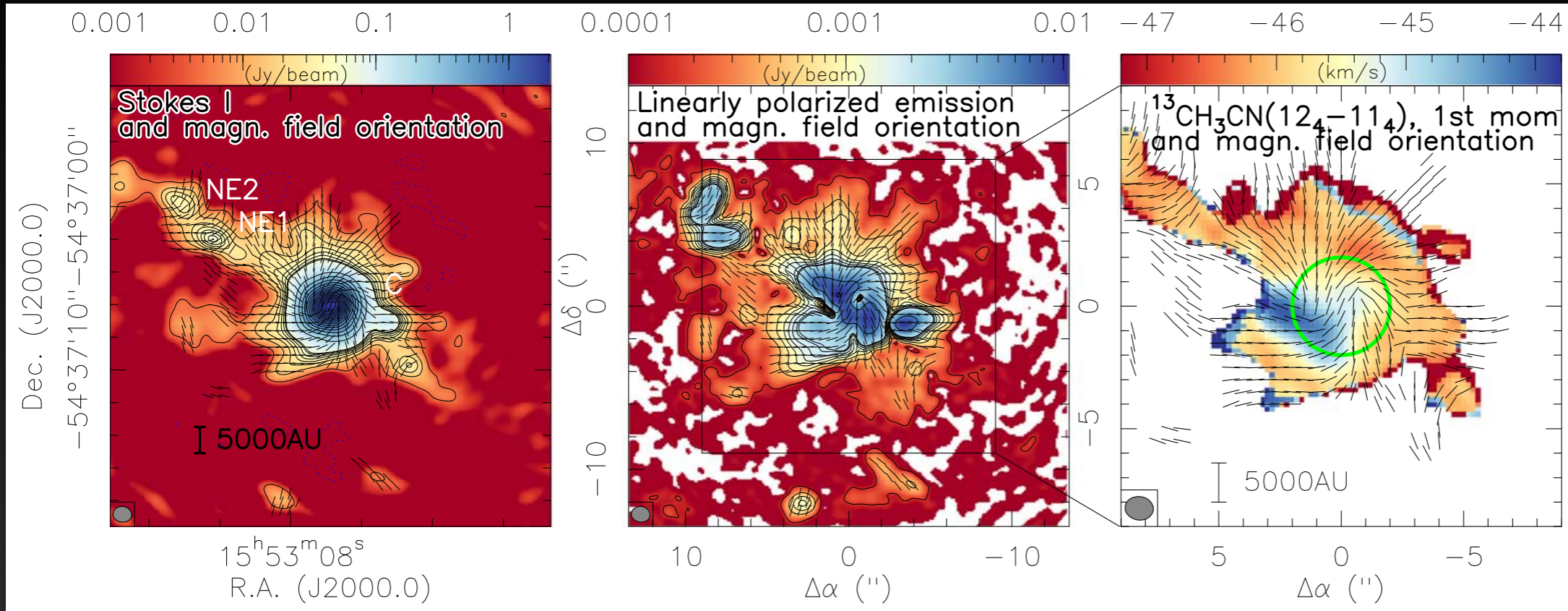


Questions / Discussion

- What disk properties should be compared?
 - size
 - inner radius
 - scaleheight (as function of radius)
 - lifetime
 - inclined disks fraction
 - ...
- What disk properties can be obtained from observations?
- What processes increase the complexity?
 - binary disks
 - streamers
 - feedback
 - stellar cluster
 - ...



Observations



Beuther et al. (2020)