

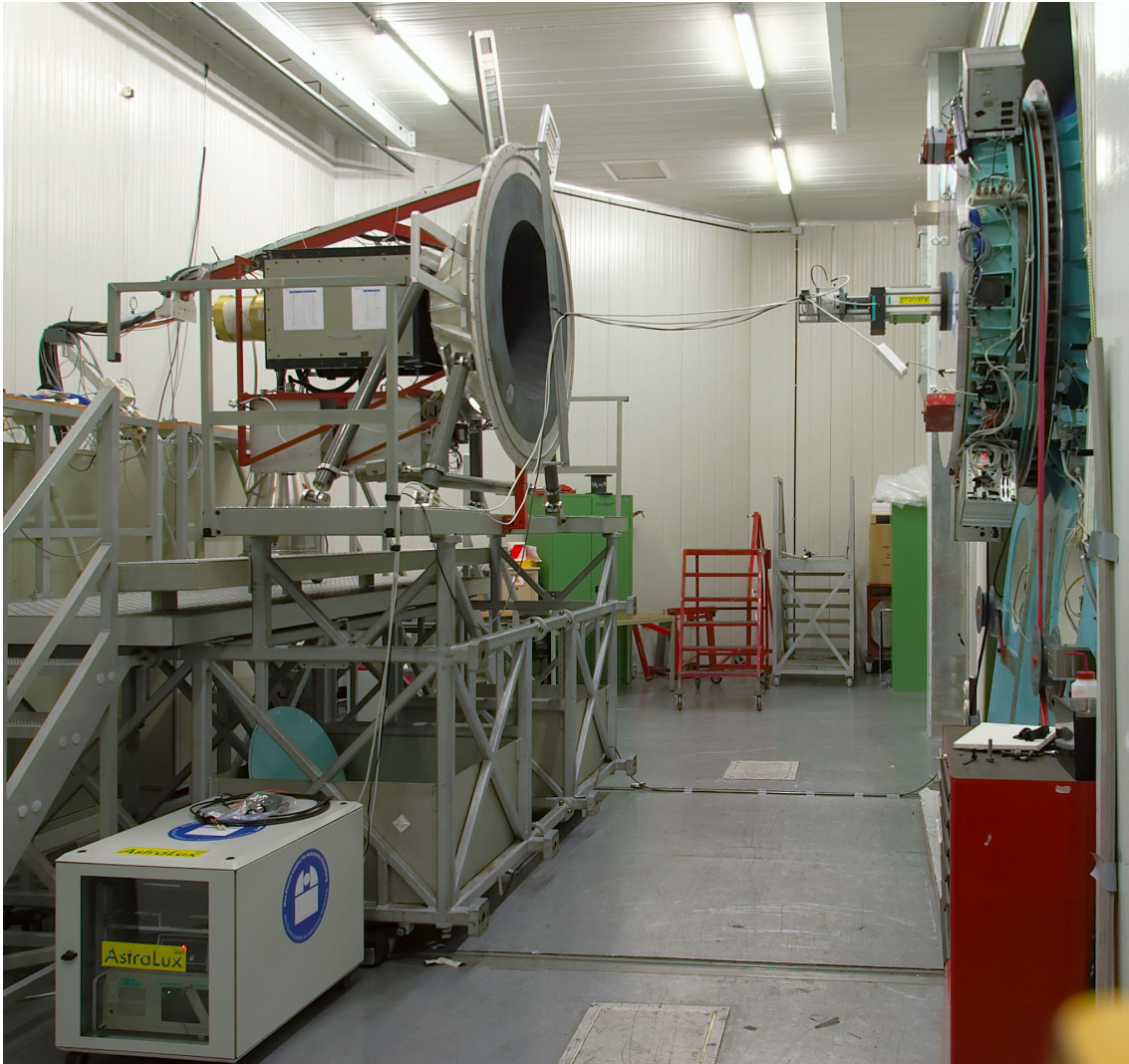
# AstraLux Sur User's Guide

Stefan Hippler, hippler@mpia.de, May 15, 2016

Felix Hormuth, hormuth@mpia.de, November 2007

AstraLux Sur Homepage: [http://www.mpia-hd.mpg.de/ASTRALUX/sur\\_index.html](http://www.mpia-hd.mpg.de/ASTRALUX/sur_index.html)

Observatory webpages: <http://www.eso.org/sci/facilities/lasilla/>



**Figure 1.** *The AstraLux Sur instrument mounted at the Nasmyth B focus of the NTT. The AstraLux Sur camera is attached to the adapter/rotator flange. A filter wheel in black sits between the camera and the flange. The EFOSC2 instrument has been separated from the NTT rotator. One of the 3 AstraLux Sur computers sits in the rack shown on the lower left. A dedicated Gigabit fiber links connects the local camera control computer to the remote camera computer sitting in the NTT local control room.*

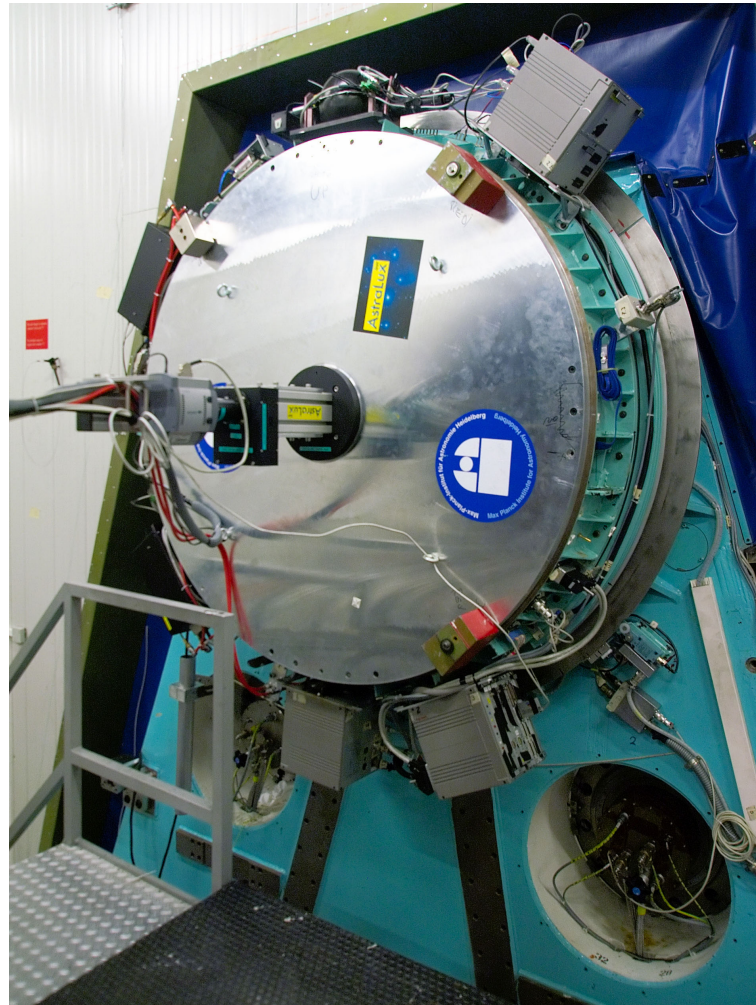
## Contents

<b>1</b>	<b>Some pictures first</b>	<b>4</b>
<b>2</b>	<b>Introduction</b>	<b>6</b>
2.1	Purpose of this document . . . . .	6
2.2	Recommended reading . . . . .	6
<b>3</b>	<b>The AstraLux Sur network: computers and accounts</b>	<b>7</b>
<b>4</b>	<b>Filter Setup</b>	<b>8</b>
4.1	Standard filters . . . . .	8
4.2	Filter GUI . . . . .	8
<b>5</b>	<b>Camera operation</b>	<b>9</b>
5.1	The most important icons . . . . .	9
5.2	Loading configurations . . . . .	9
5.3	Live display . . . . .	9
5.4	Slider window . . . . .	10
5.5	Shutter . . . . .	11
5.6	Cooling . . . . .	11
5.7	Acquisition setup . . . . .	12
<b>6</b>	<b>Quick guide to Lucky Imaging</b>	<b>14</b>
6.1	Filename conventions . . . . .	14
6.2	Flat-fields . . . . .	14
6.3	To bias or not to bias . . . . .	14
6.4	Use the right FoV . . . . .	15
6.5	Finding the right gain and exposure time . . . . .	15
6.6	How many frames to acquire . . . . .	15
6.7	Photometry: a thorny issue . . . . .	15
<b>7</b>	<b>Preparing the control desktops</b>	<b>16</b>
<b>8</b>	<b>The AstraLux Sur applications &amp; windows</b>	<b>17</b>
8.1	AstraLux File Receiver . . . . .	17
8.2	AstraLux Data Transfer Monitor . . . . .	17
8.3	Pipeline Windows . . . . .	17
<b>9</b>	<b>Data types, pipeline products</b>	<b>19</b>
9.1	Data directories and data products . . . . .	19
9.1.1	Contents of AstraLux_input . . . . .	19
9.1.2	Contents of AstraLux_output . . . . .	19
9.1.3	Contents of AstraLux_header . . . . .	20
9.1.4	Contents of AstraLux_calib . . . . .	20
9.2	Available storage, minimum free space requirements . . . . .	20
<b>10</b>	<b>Notes on the NTT TCS catalog format</b>	<b>22</b>
<b>11</b>	<b>Prepare backups</b>	<b>23</b>
<b>12</b>	<b>Troubleshooting</b>	<b>24</b>
12.1	Help! I cannot find my target! . . . . .	24
12.2	Camera software crashes . . . . .	24
12.3	Reasons and cures for pipeline crashes . . . . .	24
12.4	Reasons and cures for receiver problems . . . . .	24

---

12.5 Data files on a pipe2 have a size of 0 bytes . . . . .	25
<b>13 Using USB hard disks on a pipe2</b>	<b>26</b>
<b>14 Astralux Sur EMCCD Linearity Plots</b>	<b>27</b>
<b>15 Astralux Sur Graphical User Interfaces Screenshots</b>	<b>29</b>

## 1 Some pictures first



**Figure 2.** *The AstraLux Sur instrument and its flange mounted to the adapter/rotator of the NTT. The AstraLux Sur camera is attached to the adapter/rotator flange. A filter wheel in black sits between the camera and the flange.*



**Figure 3.** *The AstraLux Sur boxes and control computers inside the NTT local control room.*



**Figure 4.** A view inside the old NTT local control room: the Astralux Sur remote camera computer *pleione2* on the table left, and the pipeline computer *apipe2* below the table. The image shows the orange fiber cable on the left and the white 8-port network switch on the very right of the table.



**Figure 5.** A view inside the new operations building (NOB): An X-terminal with 1 monitor connects to the remote camera computer in the old NTT local control room. Another X-terminal with 2 monitors connects to the pipeline machine in the old NTT control room. Observers prepare for night observations.

## 2 Introduction

### 2.1 Purpose of this document

*AstraLux Sur* is the La Silla NTT 3.5 m Lucky Imaging camera. With a pixel scale of 31 mas it allows nearly diffraction limited imaging at wavelengths longwards of 800 nm over a field of view of 512×512 pixels. The heart of the instrument is an electron multiplying high speed CCD (EMCCD) with virtually zero readout noise.

This document does not intend to give a thorough description of the instrument or the Lucky Imaging observing technique. For more information about these topics you may look into the diploma thesis of Felix Hormuth which had AstraLux (the Calar Alto Lucky Imaging Camera) as its main topic or read the PhD theses of Bob Tubbs and Nicholas Law which describe similar instruments and give valuable information about the Lucky Imaging technique in general and specific data processing steps.

For a description of the daily task to be performed during / before observations, please see the separate checklists.

### 2.2 Recommended reading

For a general introduction to Lucky Imaging and the *AstraLux Sur* instrument, you may have a look at the following sections of the AstraLux diploma thesis, which is available as PDF file at the AstraLux homepage <http://www.mpia.de/ASTRALUX>:

Section	Pages	Topic
1.5.3	14–18	Lucky Imaging: what is it, why does it work, which filters make sense to use.
3.2	28–31	EMCCDs: how do they work, peculiarities.
3.3.2	32–43	AstraLux camera characteristics: gain, linearity, noise, etc.
4.3	50–53	Pipeline steps, e.g. quality assessment, image reconstruction.
5.2.5	65–66	Atmospheric dispersion effects.
5.4.1-5.4.2	68–71	Temporal characteristics, correlation times.
5.5.1	75	Isoplanatic angle.
5.5.2	76	Reference star magnitude requirements.
6.4	86–87	Recommendations for the astrometric calibration of AstraLux.

Astronomers who want to know more about the data quality and examples of observational results might read Chapters 5 and 7 in full length.

The PhD theses of Bob Tubbs and Nicholas Law can be found via the Cambridge LuckyCam Homepage at [http://www.ast.cam.ac.uk/~optics/Lucky\\_Web\\_Site/references.htm](http://www.ast.cam.ac.uk/~optics/Lucky_Web_Site/references.htm).

### 3 The AstraLux Sur network: computers and accounts

#### See separate sheet for passwords!

The AstraLux Sur hardware can be split into three segments: one is made up by the camera computer and electronics at the Nasmyth B focal station, the second by one Windows computer and the Linux pipeline machine inside the "old" local control room of the NTT building. The third segment is actually not exclusively attributed to AstraLux Sur, but consists of usually two X-terminals, which connect to `wg5p1` and `wg5off` in the new operations building, NOB, which is used for observations with e.g. FEROS, GROND, WFI, and HARPS also.

In the current layout (see Fig. 19), data transfer between the camera and the other machines in the dome is accomplished by an exclusive 1 GBit duplex fibre connection between the camera computer `asterope2` and the Windows machine `pleione2`. This connection is only used for raw data transfer and remote control. No other machine in the network than `pleione2` can see the camera computer `asterope2`, and only a private network is used.

The built-in 1 GBit copper Ethernet port of `pleione2` is connected to an 4-port 1 GBit switch in the local control room. The pipeline computer `apipe2` connects to the same switch. This switch also provides the connection to the general La Silla network. There are a few visitor LAN cables available, one of them should be connected to the AstraLux\_Sur switch.

Using the fibre link exclusively for the raw data transfer and remote control of the camera guarantees sufficient network performance, even if the pipeline computer accesses data on `pleione2` during a running acquisition. It ensures that the camera computer cannot be disturbed or slowed down by external network traffic.

Here is a summary of the machines, which are used in the context of AstraLux Sur observations, the tasks of these machines, and which usernames apply:

Name	Location	OS	Login	Purpose
<code>wg5off</code>	NOB	Linux	<code>astro</code>	Local account, only used to connect to <code>apipe2</code> and start the pipeline software there.
NTT operator PC	NOB	Windows	—	Local account, remote desktop connection to <code>pleione2</code> , and eventually to <code>asterope2</code> .
<code>wg5p1</code>	NOB	Linux	<code>pipeline</code>	Local account, only used to connect to <code>apipe2</code> and then to <code>pleione2</code> , and eventually to <code>asterope2</code> . This is an alternative to the <code>wg5off</code> machine.
<code>wg5dhs</code>	NOB	Linux	<code>visitor</code>	Local account, only used to connect to <code>apipe2</code> and then to <code>pleione2</code> , and eventually to <code>asterope2</code> . This is another alternative to the <code>wg5off</code> machine.
<code>apipe2</code>	"old" NTT local control room	Linux	<code>astraobs</code>	Pipeline, data storage, connection point for external USB harddisks.
<code>pleione2</code>	"old" NTT local control room	Windows	<code>user</code>	Raw data storage, remote connection to camera computer
<code>asterope2</code>	NTT Nasmyth B	Windows	<code>user</code>	Direct camera control. Can only be connected via <code>pleione2</code> . Has a local monitor for maintenance purposes.

#### IMPORTANT NOTE!

A crucial point for the automatic processing of raw data by the quicklook pipeline is the network connection between `apipe2` and `pleione2`. The raw data directory on `pleione2` has to be mounted at `/pleione2` in the pipeline machine's filesystem. *This may not be the case after a reboot!*

At the beginning of an observing run you should therefore do a `ls /pleione2` on the pipeline machine. If you can see the directory `AstraLux_input` and the file `lastfilter.txt`, everything is fine. If not, execute the command `mount_shares` as the pipeline user `astraobs` on `apipe2`. If this does not succeed, it may be necessary to reboot both the Windows machine `pleione2` as well as the pipeline machine before retrying.

## 4 Filter Setup

### 4.1 Standard filters

The filter wheel of Astralux Sur holds up to 6 filters with 25.4 mm diameter. Please note: the filters are in the original f/11 beam, hence filters with different thickness require refocusing.

Lucky Imaging observations are performed in the SDSS  $i'$  and  $z'$  band. Though the camera is sensitive at wavelengths well shorter than 385 nm, using a completely open filter position should be avoided to limit atmospheric dispersion effects to an acceptable level.

The suggested standard configuration of the filter wheel is:

Pos.	Spectral band	GUI name	Thickness [mm]	$\lambda_{\text{cen}}$ [nm ] $\lambda_{\text{cut-on}}$ [nm ]	FWHM [nm]
A	y	y1000	6.3	1000 (cut-on)	> 1200
B	$z'$	SDSSz	3	912	100
C		OPEN	3	—	—
D	y	RG1000	3	1000 (cut-on)	> 800
E	$i'$	SDSSi	3	766	136
F		CLOSED	3	—	—

**Table 1.** *Standard filters for AstraLux Sur as of January 2012. Central wavelengths and FWHM refer to the convolution of filter transmission with camera quantum efficiency and atmospheric transmission profile. See also Appendix B of the AstraLux thesis for filter curves. The GUI name refers to the correct entry in the wheel control GUI filter list. Only these names are recognised by the pipeline and correctly attributed to the corresponding filter properties.*

### 4.2 Filter GUI

The filter GUI is pretty straightforward. The only configuration task that has to be performed is to let the GUI know which filters are installed. The filter names are stored on the local hard-disk of the camera computer `asterope2` in the file `C:\orielfilters.txt`. This file contains one filter name per line for each filter position A to H. The last line should be followed by a carriage return (press enter). The filter names are displayed in the filter GUI and will also appear in the FITS headers containing the telescope data.

The properties of the filters listed in Table 1 are known to the pipeline in the sense that approximate Strehl values can be computed on an absolute scale, at least for the  $i'$  and  $z'$  filters. You have to stick to the filter names given in Table 1 for this purpose. If you use other filters, the pipeline will on default fall back to SDSS  $z'$ . This will affect the accuracy of the absolute Strehl measurements but not the image selection process.



## 5 Camera operation

Foreword: this section will not cover *all* possible settings and options of the camera software, but only the ones you will need for Lucky Imaging observations. Feel free to play around with the software and to use the online help to get acquainted with it. You cannot damage anything. Just one word of caution: if you are prompted to save something, just say no... Otherwise you might overwrite configuration files or produce large data files where they are not supposed to be saved.

### 5.1 The most important icons

Here is an overview of the menubar icons you will probably want to use:



Start live display. This does not save any data.



This starts the acquisition, data is spooled to a fits cube with the name defined in the 'Spooling' tab in the camera setup window. The acquisition will stop when the desired number of frames has been reached (Kinetic series length) or when you press the abort button.



Stop the live display or abort a running acquisition.



Open the acquisition setup dialogue, needed to set the save filename, to set the number of frames, and to chose the field of view.



Open the EM-gain and exposure time slider window.



Open the shutter control window. Not available during acquisition or running live display.



Reset the display section to the full image.



Fix the greylevel cuts at the current values. Click again to release cuts and restore min/max scaling.



Fix the greylevel cuts at the current values. Click again to release cuts and restore min/max scaling.

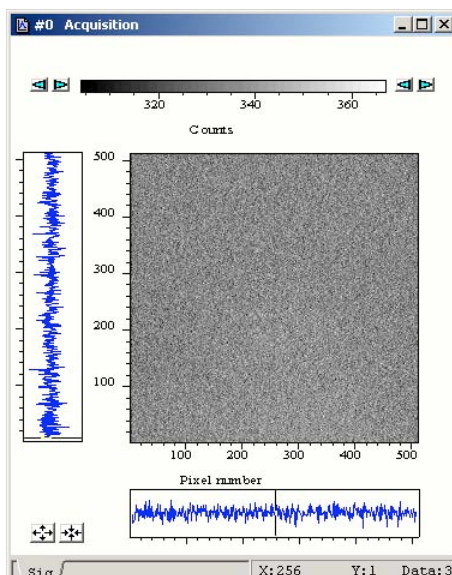
### 5.2 Loading configurations

The software allows to set a lot of options. In fact most of them should not be changed unless you very exactly know what you are doing. For the two main applications, namely Lucky Imaging in low light conditions and flat-fielding with high SNR, there are two readily available configurations. They can be accessed via the menu by choosing Files --> Configuration Files --> Load. See also extended checklist document.

### 5.3 Live display

This is probably the most useful thing about AstraLux Sur: what you see is what you get. The live display (see Fig. 6) also allows you to check the illumination level: you can point the crosshair cursor by clicking with the mouse somewhere in the image to see position and counts in the bottom status bar of the live display. You may use the cursor keys to move the crosshair cursor by single pixel steps.

By holding the left mouse button pressed you can draw a rectangle somewhere in the image area. When you release the mouse, the display will zoom in to this region.



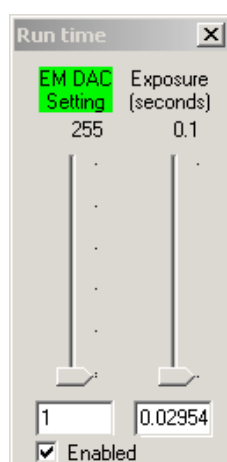
**Figure 6.** *The live display*

The 'Reset' icon will bring you back to full field display. Above the live display you will see the actual greyscale cuts – default is automatic min/max scaling. If you look at the right end of the scale you can determine the approximate maximum count level – an easy way to check if you should increase or lower gain or exposure time. If you fix the cuts via the icon in the menu bar, you can use the arrows at the left and right end of the greyscale bar to manually change the cuts.

By clicking with the right mouse button into the image area, you get a pop menu that contains the submenu 'Palettes'. Here you can choose differently coloured lookup tables.

## 5.4 Slider window

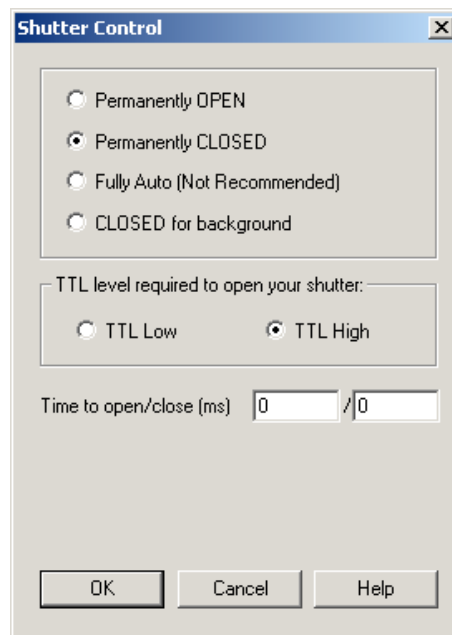
The slider window (see Fig. 7) gives you easy access to the electron multiplication (EM) gain and exposure time setting. You can use the mouse to drag the sliders or type values directly into the fields below them. You can in principle switch off the EM amplifier here, but you shouldn't. The EM gain slider is disabled if the conventional amplifier is in use. Please note that the EM setting here is *not* the physical gain and that it is not linearly related to it! See the AstraLux thesis for typical gain curves for different temperatures. See also Fig. 13 and Fig. 14 for with and without electron multiplication linearity.



**Figure 7.** *The slider control window for exposure time and EM gain.*

## 5.5 Shutter

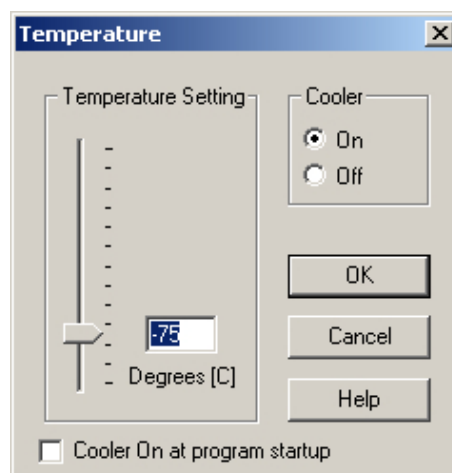
In the shutter control window (see Fig. 8), opened via the shutter icon, only two settings are of interest: either 'Permanently open' or 'Permanently closed'. The latter is used for dark/bias acquisitions, otherwise the shutter can be left open. Do not change any other settings here!



**Figure 8.** *The shutter control window*

## 5.6 Cooling

To switch on/off the CCD cooler and to set the desired temperature, select Hardware -> Temperature. This will open up the cooling control window (see Fig. 9). The standard CCD temperature to be used is -



**Figure 9.** *Cooler control window*

75°C. This value can be maintained even in warm summer nights. For security reasons, please leave the option 'Cooler On at program startup' unselected. Cooling down from +20°C takes  $\approx 10$  minutes, the progress can be monitored via the temperature display in the lower left corner of the camera software. A red background means that the current temperature is different from the requested one or that it is not stabilised yet. Wait until the background turns to blue before starting with acquisitions. Please note that the temperature display is not updated during acquisition or while the live display is running.

If the temperature display turns to 'OFF' or shows a different value than  $-75^{\circ}\text{C}$  during the night, there may be a hardware problem. Either the power supply of the camera has been disconnected or the camera is not able to get the heat of the Peltier cooler out of the housing – which could happen if e.g. the camera fan fails. In this case please check immediately directly at the instrument what happened. In case you hear a persistent loud beep, this is the temperature fuse that has triggered due to overheating and switched off the cooler. At a temperature set-point of  $-75^{\circ}\text{C}$  this will never happen in free air even in summer, so this is indicator for a serious problem with the cooling system. Especially after very long acquisition sequences the background colour of the temperature display may sometimes change to red for a couple of minutes.

At the end of observations, please set the temperature to  $0^{\circ}\text{C}$ . **Do not simply switch off the cooler.**

## 5.7 Acquisition setup

The acquisition setup dialogue offers a lot of options and has multiple tabs. In fact, only few have to be ever touched and it is recommended to leave all other settings unchanged. All options not mentioned in the following should not be touched! In case you mess something up, you can reload the appropriate configuration.

The tab 'Setup CCD' (see Fig. 10) offers three important options. Firstly, you can set here the exposure time for the single frames – this is equivalent to doing so in the slider window. Secondly, here you have to enter the number of desired frames in the field 'Kinetic series length'. Thirdly, you can switch off and on the Frame Transfer mode of the camera. In *frame transfer mode*, the imaging area of the CCD is exposed while the last image is read out. This gives you nearly 100% duty cycle, but limits the minimum possible exposure time to the readout time. If you need shorter exposure times, you can either use a smaller FoV, because this will be read out faster, or switch off the Frame Transfer mode. This will allow in principle exposure times as short as 10 microseconds, but at a cost of a reduced duty cycle. Do not touch anything else in this dialogue unless you are sure what you are doing!

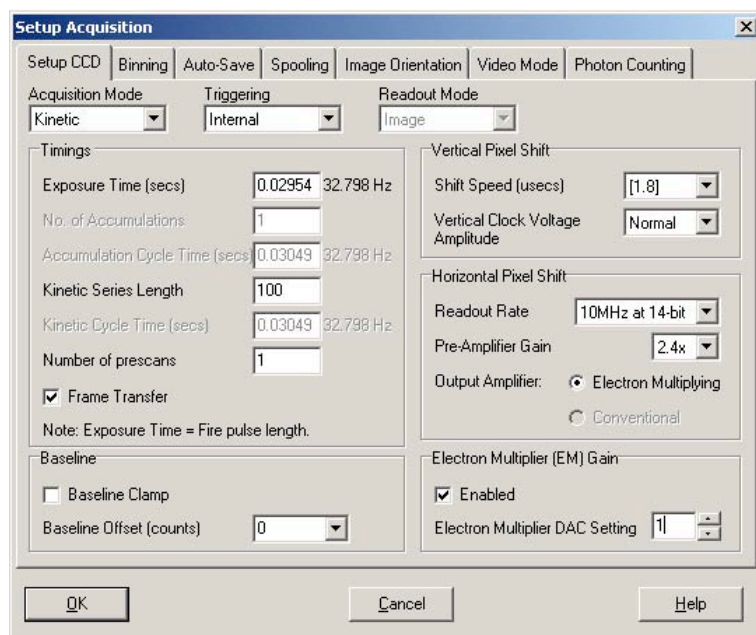
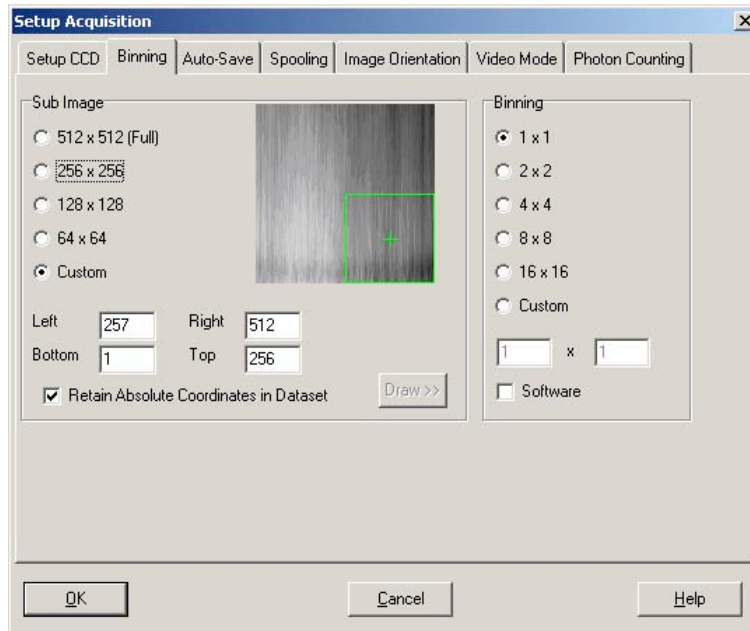


Figure 10. CCD setup dialogue

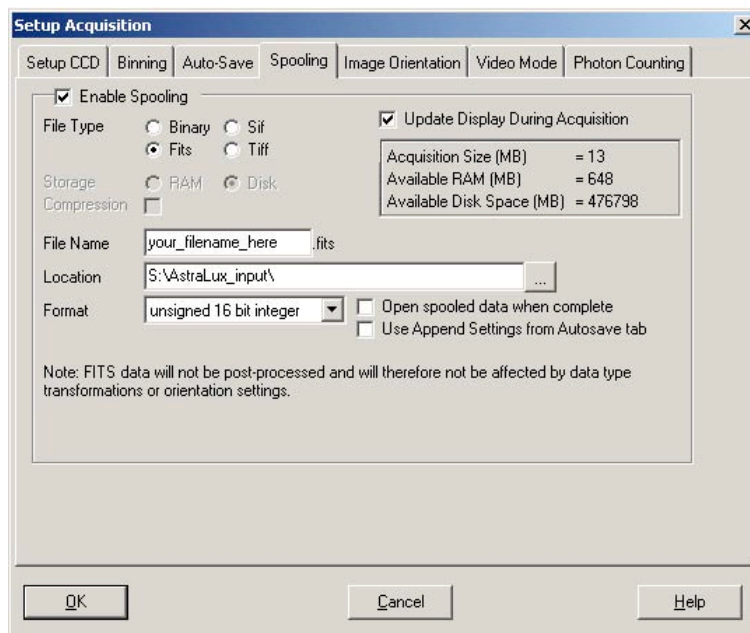
The tab 'Binning' (see Fig. 11) allows you in principle to activate pixel binning – not useful at all for diffraction limited imaging. The important part is on the left side. Here you can select either to use the full FoV with  $512 \times 512$  pixel or a sub-array of  $256 \times 256$  pixel (smaller areas are also possible but not recommended). If you select a sub-array you can drag the green rectangle to position it freely on chip. It is recommended to use one of the *right* quadrants and to stick to it whenever you use the small FoV.

The tab 'Spooling' (see Fig. 12) is finally used to set the filename of the output data cube(s). See below for filename conventions. Never change the path in this window, only the field 'File Name'! Otherwise the



**Figure 11.** *The sub-array selection dialogue.*

pipeline will have a very hard time finding your data. Don't touch anything else here. You have to use a new filename for each acquisition you start! Do not overwrite existing files!



**Figure 12.** *Set your filename in the Spooling dialogue.*

Feel free to have a look at the other tabs of the configuration dialogue or to consult the software's help to read more about the possibilities.

If you have configured everything as desired, you can now start the acquisition with the camera-like icon from the menu bar. During acquisition you will see the number of acquired frames counting up in the bottom status bar of the camera software. Sometimes this display will not appear or seem to be frozen. In this case it will help to click once somewhere in the menu (e.g. on 'Files') without actually selecting anything. Especially when using the full FoV the counter may get updated more frequently if you resize the live display a bit, it will eat up all available display bandwidth if it is too large.

## 6 Quick guide to Lucky Imaging

### 6.1 Filename conventions

- Important rule: NEVER OVERWRITE AN EXISTING FILE! The pipeline/receiver will not be able to deal with this. If you have to abort and restart an acquisition, use a new filename (e.g. `my-target_2ndtry_SDSSi` after you aborted `my-target_SDSSi`).
- Put the filter name in the filename! Firstly, this will make it much easier for you to find the right files later on hard-disk, secondly the pipeline relies to some extent on this information. Just add a `_filtername` to each spooling filename, where `filtername` is the name that appears in the filter wheel GUI.
- If you don't want the pipeline to attempt to reduce a specific dataset (e.g. because you just acquired a few images of a photometric standard), then use the suffixes `'_test'` or `'_phot'`.
- If you want the pipeline to produce a master bias from a dark cube, then add the suffix `'_Bias'`.
- For flat-fields, use `'_Flat'` accordingly.
- If you take the bias for a flat-field, use `_Flat_Bias` (see also checklist).

### 6.2 Flat-fields

If you want a bias frame for the flat field, take it first, ie use the flat field configuration, close the shutter, and use 300 frames with the minimum exposure time. Save the file ending with `_Flat_Bias`.

You should obtain a flat-field cube with *at least 50 frames* in it for each filter you want to use later. Sky-flats are superior to dome-flats. Please remember that you have very small pixels – you have to start right after sunset with flat-fielding if you want to have a good SNR in the  $z'$  band! A good SNR is usually reached if you have at least 4000 counts in the live display.

Since flat-fielding is done in high SNR conditions, you should use the *conventional* amplifier – a suitable configuration file is provided, see checklist. The flat-fields can safely applied to data obtained through the electron amplifier output. But please note that the horizontal readout direction is reversed between these two outputs! The quicklook pipeline *accounts for this effect* and will also automatically select the right region of the flat-field when observing with a sub-array of the chip. *You therefore only need flat-fields for the full field of view.*

### 6.3 To bias or not to bias

If you take flat-fields you will certainly need an accurate bias acquisition – otherwise you will have a hard time with applying this flat-field, and the pipeline will refuse to generate a master-flat anyway if it cannot find an appropriate bias cube.

In the case of science cubes obtained in Lucky Imaging mode, it is however usually not necessary to obtain a dedicated bias cube for each science target. In fact most pixels of your science cube will contain nothing else than blank sky, and these are perfectly suited to determine bias level and bias structure from the science data itself – see Nicholas Law's PhD thesis for a prescription how to do this. Bias frames should be taken in the same mode as the science data are taken, that means all CCD parameters should be the same as for Lucky Imaging. 300 frames with the shortest exposure time is a good choice for full frames.

## 6.4 Use the right FoV

Only if you absolutely need the full  $16 \times 16''$  FoV you may use it! Otherwise you are better off by using only  $256 \times 256$  pixels. This will allow shorter exposure times, give you less blank sky and hence less raw data to handle with, and the quicklook pipeline will be much faster. Do not use smaller fields, since this can cause problems when the reference star gets too close to the image border.

Use one of the right side quadrants of the CCD for the small FoV and stick to your choice throughout your run. Changing as few parameters as possible is always good. Best is to check while flat-fielding which quadrant is least affected by dust.

## 6.5 Finding the right gain and exposure time

*Golden rule:* use the shortest possible exposure time in frame transfer mode. This will give you a better temporal sampling of the speckle pattern. This is one more reason why you should prefer the small FoV if possible: you can use 15 ms instead of 29 ms minimum exposure time. Of course, if your target is rather dim and you are already using the maximum EM gain setting of 1000, then you have to increase the exposure time. As a rule of thumb, the maximum count value should be around 10000 ADU, i.e. the greyscale bar in the live display should only occasionally show the number 10000. You can also open a histogram display, as this will show the maximum count value. To do so, start first the live display. Then click on the icon with the two read peaks in the right part of the icon bar (image to be added above...). At the low flux end it is not so simple. Also as a rule of thumb, your reference target should always be easily visible on the live display. Otherwise you will get a very strange PSF with all noise coherently added to the central pixel. Be encouraged to test with a faint target what happens if you choose different exposure times. Try to get a feeling for the signal levels you need to get a useful result. You might e.g. experiment with a known binary to see how the exposure time selection affects resolution, PSF shape, and Strehl ratio.

If you need to observe very bright targets, you might have to switch off the Frame Transfer mode in the Acquisition Setup dialogue. This will allow you to use exposure times down to  $< 1$  ms at the cost of a reduced duty cycle of the camera.

## 6.6 How many frames to acquire

This is basically determined by the effective exposure time you want to achieve. At a 10% selection rate and with 10000 frames with 30 ms exposure time you will have e.g. 30 s worth of integration time in your final result. At the lower end, you should avoid to acquire less than 2000 frames. Doing so guarantees that you sample a reasonable span of atmospheric turbulence variation and will reduce any static aberrations in the final results.

## 6.7 Photometry: a thorny issue

The electron gain setting is not linearly related to the physical electron gain, and the actual gain also depends on the temperature. If you want to determine e.g. the  $i'$ - $z'$  colour of an object, it is best first to observe it in  $i'$ , since you usually get more counts here, and then to observe it in  $z'$  **without changing the gain**. If you need not only the colour, but also the magnitude, the optimum strategy would be to observe a photometric standard using the *same gain* afterwards.

You can also calibrate the EM gain curve by observing the same star with different EM gain settings. This should allow you to do all-sky photometry with at least 10 % accuracy.

## 7 Preparing the control desktops

**!!! See also extended checklist for daily preparation !!!**

- Login to `apipe2` using the `pipeline` account on `wg5pl` and the `astraobs` account on `apipe2`.
  - Connect to `pleione2` with the command: `rdesktop -a 16 -g 1280x1024 -u user pleione2 &` or just type `pleione2`. Once the `pleione2` screen appears, log in as `user`.
  - On the remote desktop of `pleione2`, double-click the icon named “`asterope2.RDP`”. This opens again a remote desktop connection, this time to the camera control computer at the Nasmyth B focal station. Again log in as `user`.
  - On the desktop of `asterope2`, start the filter-wheel GUI via the icon named “`FILTER.py`”. A log window and the actual control window (you will recognise it, it is the one with large, friendly buttons) pop up. Place the control GUI at the right side of `asterope2`'s desktop.
  - Start the camera software via the icon named “`Andor iXon`”. A splash screen will appear for up to 15 seconds, then you should see the camera control software window. Resize it so that it fills the part of the desktop not occupied by the filter GUI (do not care about the filter log window, you will not need to see it).
  - **NEVER EVER START ANY OTHER SOFTWARE ON THE WINDOWS MACHINES DURING OBSERVATIONS!**  
Of course, during daytime you can do what you want, but: the real-time display and data transfer during observations need quite some resources, and any other software can heavily interfere. Don't complain if your acquisition crashes because you started “just” the Windows explorer...
- Login to `apipe2` using the `astro` account on `wg5off` and the `astraobs` account on `apipe2`.
  - Start the whole holy suite of IDL programs with just one command:  
`start_astralux`
- If you did all as told, your screens should now look approximately like in Fig. 16, Fig. 17, and Fig. 18.



## 8 The AstraLux Sur applications & windows

This is a brief overview of the pipeline & helper applications started with the last command. Please note that they can be individually started/stopped, see Troubleshooting section.

### 8.1 AstraLux File Receiver

The receiver monitors the raw data directory on the windows machine pleione2. Each time a new FITS file is created, the message >>>ACQSTART<<< is printed, a sound is played (not in the NOB), and all vital telescope parameters are retrieved. These are saved as FITS header in the AstraLux.header directory, using TELHDR as prefix in front of the FITS file name specified in the camera software. If a new FITS cube of the same acquisition is started, a short sound (not in the NOB) will be played, and a message printed. When an acquisition is finished, you will see the message <<< ACQEND >>>, and – guess what – hear a sound (not in the NOB). Each time a FITS file is finished (not only after the complete acquisition), the header of this file is extracted and stored away in the header directory with the prefix CAMHDR. What is more important: each finished FITS file is scheduled for FTP transfer to the pipeline machine. If all cubes belonging to a specific observations have been received, the quicklook pipeline will be triggered. If you abort an acquisition in the camera software, the receiver will recognise this when you start the next one (and of course: play a sound!, but unfortunately not in the NOB).

### 8.2 AstraLux Data Transfer Monitor

This logs the the activity of the so-called FIFO command execution script. This piece of software watches a directory for the arrival of time-stamped text files and simply executes the commands saved in these files in the correct temporal order – one at a time. The FTP transfer of the raw data is handled by this script, ensuring that only one file is retrieved at the same time, and that the quicklook pipeline is not started before all files have been received. The messages you see in this window belong to the wget processes retrieving the raw data files. Of some interest is the transfer speed, this should be *on average* >18MB/s

### 8.3 Pipeline Windows

The pipeline windows in detail:

- **AstraLux Reference Pick:** this shows a stack of the *first two seconds* of the data cube currently processed. The pipeline will automatically pick the brightest object as the Lucky Imaging reference position and draw a red circle around it. If you see the message 'Click on reference!' at the bottom of this window, the pipeline was not able to find a sufficiently bright reference object. This can be the case if your target is very faint. You have to select a reference manually by clicking with the left mouse button in the window. The content of the reference pick window is saved as a PNG image file for each processed data cube, allowing you to easily reconstruct which object was used as reference.
- **Stacked image:** After the pipeline has measured the image quality of each single frame it will show a plain stack *without* any tip/tilt correction or bias / flat-field processing in this window. This image is also saved as FITS file. A 2D Gauss-fit is performed on the brightest object, and the short-axis FWHM is used to estimate the equivalent seeing in V-band, printed at the bottom of this window. This value may be quite different from the one measured by the DIMM. Especially in summer it can be significantly better, while dome seeing may give you much worse values in winter. In any case, it is the seeing that is relevant for your observation and that you can state in the night report.
- **Tip/Tilt corrected:** NOT YET IMPLEMENTED!
- **Strehl & Reference Statistics:** Here you see a histogram of the Strehl measurements for your reference object, a cumulative plot giving you the cutoff Strehl value, i.e. the lowest Strehl contained in a selection of 10%, 2%, and 1%, and a scatter plot of the reference peak position.

- **Quicklook Pipeline Result:** After final processing this window displays the sqrt-scaled Lucky Imaging result for a 10% selection.
- **Quicklook Pipeline Log:** Here you find diagnostic output which will most likely not be of great interest for the average user. However, if you see nasty IDL error messages, followed by the prompt 'AstraLux>' here, the pipeline has crashed and needs to be restarted.

## 9 Data types, pipeline products

### 9.1 Data directories and data products

The following directories are located in the home directory of the pipeline user `astrobs` on the machine `apipe2`:

<code>AstraLux_input</code>	raw data cubes
<code>AstraLux_output</code>	quicklook pipeline result files
<code>AstraLux_calib</code>	master flat and master bias files generated by the pipeline
<code>AstraLux_header</code>	camera and telescope header files for each data cube

Please note that these directories are symbolically linked to the home directory of the pipeline user. In order to use different data directories per observing night you can use the template script `CHANGE_LINKS` that you can find in the `astrobs` home directory.

Doing an `'cp -rv'` of such an directory to e.g. a FAT file system on an external hard-disk might therefore only work from the real locations of these directories (`/disk-b/ASTRALUX/` for the raw data, `/home/astrobs/` for the other files).

#### 9.1.1 Contents of `AstraLux_input`

Here you will find the unmodified raw data cubes as they have been retrieved directly from the primary raw data storage directory on `pleione2`. These are ordinary 3D FITS files with camera information header, summarising exposure and timing parameters of the CCD.

Since the maximum file size for an individual cube is 2 GB, long acquisitions will be broken down into multiple files. If you e.g. requested 10000 full frames and chose the filename `my-image` in the camera software, you will get three files: `myimage.fits`, `my-image.X2.fits`, and `my-image.X3.fits`, containing 4096, 4096, and 1808 frames. The pipeline pretty well knows how to handle this and how to locate a specific frame.

Note: A file size of only 532800 bytes is the minimum file size, just enough to contain one image of 512 x 512 x 2 bytes plus 2 x 2880 bytes for the FITS header, in total 529988 bytes. To make this number of multiple of 2880, the FITS standard, results in 532800 bytes. Usually, a data file of this size indicates an empty data file, because Astralux data are cubes with typically 10000 frames.

#### 9.1.2 Contents of `AstraLux_output`

Here the pipeline will place the *quicklook* data products. Assuming you used `my-image` as filename for a Lucky Imaging observation, you will get the following files:

- `SELECTION_my-image__000.png`: this is a screenshot of the reference selection window, allowing you to reconstruct easily later on, which object was used as Lucky Imaging reference.
- `STACK_my-image__000.fits`: this is the plain seeing and telescope tracking limited stack of all images in the data cube, identical to the image displayed by the pipeline to estimate the seeing.
- `STREHLSTATS_my-image__000.png`: a screenshot of the Strehl statistics window.
- `RATES_my-image__000.xdr`: an IDL structure internally used by the pipeline for image rating and image selection.

- `TDRIZZLE_xxxx_my-image_000.fits`: the pipeline quicklook result. 'xxxx' here stands for the selection rate, expressed in 0.1%. The quicklook pipeline results are produced by applying the drizzle algorithm to the best 1%, 2.5%, 5%, and 10% to all frames. Please note that the pixel scale of the output files is half the physical pixel scale of  $\approx 47$  mas/px! The signal level in these files is normalised to the single frame exposure time. The bias level is estimated from the science data, and flat-fielding is applied if you obtained a master-flat for the used filter before (see extended checklist for information about taking flat-fields). For a detailed description of the drizzle algorithm, please refer to Fruchter & Hook 2002, PASP 114, 144.
- `WEIGHTS_my-image_000.xdr`: The weight maps produced during drizzling. They can give information how uniform the pixels in the output grid have been "populated".

All filenames end in a three-digit number. This will usually be 000, but will increment in case the pipeline is forced to re-reduce a dataset. Please note that the FITS files have only rudimentary headers. Camera and telescope information is stored in external header files.

### 9.1.3 Contents of AstraLux\_header

Each time a data acquisition is started or a new FITS cube is started, the receiver will retrieve a FITS header with telescope and ambient information from a machine on the La Silla network. The data are retrieved from `wt5tcs:/diska/v1tdata/tmp/pctcs`. This directory is automatically available on `apipe2`. The mount point is `/pctcs`. In case of problems with this interface, contact the La Silla software group or the NTT TIO.

This FITS header will have the same name as the camera data cube, but with the prefix `TELHDR_`.

Each time a data cube is finished, the camera information FITS header will be extracted and saved with the prefix `CAMHDR_` in this directory.

### 9.1.4 Contents of AstraLux\_calib

This directory contains the master-bias and master-flat file produced and used by the pipeline. They retrieve the prefix `'MASTERBIAS_'` and `'MASTERFLAT_'`, respectively. The pipeline applies a simple sigma-clipping algorithm to the calibration data cubes to filter out cosmics.

## 9.2 Available storage, minimum free space requirements

In total  $\approx 3$  GB of hard-disk storage are available for AstraLux. This space can be used to create *temporary* backups of your data, but there is no guarantee that these will last longer than your actual observing run, especially if there are more AstraLux observations scheduled afterwards.

The following disks are available in the AstraLux network – but not all can be used for backup:

Computer	Mount Point	Purpose	Total	Minimum free
pleione2 (Windows)	S:	Incoming raw data storage <b>Usually sufficient for one observing run</b>	6000GB (Nov. 2015)	500GB
apipe2 (Linux)	/disk-b/ASTRALUX/	Incoming raw data storage You can create directories and save raw data temporarily here. The directory <code>AstraLux_input</code> is reserved for the incoming raw data.	1500GB	500GB

You can freely use the network storage `aserv` for creating backups. In case these disks are not empty, please check with the staff before you delete any data! Also check how long this data can be kept there if you want to rely on this.

Though the incoming data partition on the Windows machine `pleione2` is larger than what is required for a single night, it is in general not a good idea to put additional data on it, as this may decrease disk performance and cause trouble during the night.

Under `/disk-b/ASTRALUX` on `apipe2` you may create own directories to save the nightly raw data or pipeline products. In case the copying of your raw data has failed during the day, you may just move the files from `AstraLux_input` into a new directory. This allows you to start with observations as usual (as a clean `AstraLux_input` directory is required every night) without losing time and/or data. You should try to get all data from this disk to your own media before you leave the mountain, as it will be certainly deleted before the next run.

## 10 Notes on the NTT TCS catalog format

A valid NTT TCS catalog file is a simple text file with one target per line. Each line has 8 fields, starting with the target name. The fields are separated by a single space. The field entries shall have no space. The generic format is:

```
TargetName RA DEC EPOCH EQUINOX ProperMotionRA ProperMotionDE Flag M or A.  
Proper motions are in arcsec/yr.
```

Example line of a NTT/TCS catalog file:

```
Rigel 051432.3 -081205.9 2000.0 2000.0 0.0 0.0 M
```

Put all your targets in a single file with the extension .cat and send it to the NTT telescope system using the command below.

**scp my\_astralux\_targets.cat tcs@wt5tcs:/diska/vltdata/pointing/catalogs**

Ask the telescope operator for the password. This command will only work on workstations like wg5off, wg5pl or wg5dhs. If your data are on your laptop with an La Silla dhcp address, you can copy the catalog file over, e.g. on wg5off with scp hippler@ndhcp028:catalog.cat local\_directory.

**Suggestion:** in case you prepare a NTT catalog file you might consider creating another catalog file for the John Thorstensen's JSkyCalc program, which allows a nice scheduling of your targets over the night. For more information on JSkyCalc see the webpage <http://www.dartmouth.edu/physics/labs/skycalc/flyer.html>.

## 11 Prepare backups

A good strategy for creating backups of your data, the raw data as well as the product of the Astralux pipeline, is to bring at least two 2 TB USB disks along. Connect one of them to the pleione2 computer and the other one to the apipe2 computer (see section 13 for more details). In the morning after the observing night, just drag the AstraLux\_input folder on the pleione2 computer (location: C:\EMCCD1) to the USB disk connected to pleione2. On apipe2 you can find a backup script in the directory \$HOME/bin/BACKUPS\_APIPE2.csh. Check the variable ABASE as well as the end of the script whether there are some lines active to create a 2nd backup. Run the script using the command shown at the beginning of BACKUPS\_APIPE2.csh.

## 12 Troubleshooting

### 12.1 Help! I cannot find my target!

Here are the top reasons:

- Telescope pointing is not accurate. Search around the nominal position using the TCS offset fields, use coordinate difference display of the telescope control to do it systematically.
- Camera shutter closed. Taken a bias and forgotten to re-open the shutter? Loaded a camera configuration file and forgot to check shutter status?
- Target too faint. Well, you may change to the first filter position, which is usually close to a clear filter any try with longer exposure times. Use the maximum electron gain. But if you cannot see your target in the Sloan filters with reasonably short exposure times <200 ms, it is too faint for Lucky Imaging anyway.

### 12.2 Camera software crashes

This virtually and practically never happens. Only when severe network problems occur the camera software will not be able to write data in real time to the hard-disk and may crash. You can then try to restart it. What probably may happen more often is that the remote desktop connection to the Windows machines breaks down and the window disappears from the left screen. The camera software will perfectly continue to run on the Windows machines, and a running acquisition will continue without problems. You can re-establish the remote desktop connection like described in the setup procedures. If the connection is terminated more than once per night you should report this in the night report as it may indicate problems with the La Silla network performance.

### 12.3 Reasons and cures for pipeline crashes

The top reasons for pipeline crashes are reference sources that are too close to the image border or vanishing references due to some movements or clouds. You will usually get a bunch of IDL error messages in the quicklook pipeline log window. While it is in principal possible to gently restart the pipeline from within this window, the following sequence can be executed from the `astraoobs` shell prompt and is more reliable.

The pipeline can be stopped and started independently of the receiver or any running acquisitions by using the command `kill_pipeline`. By typing `start_pipeline` it will be restarted. Any observations that have been finished since the pipeline stopped/crashed will not be reduced, the pipeline will continue with the next completed dataset. Data that the pipeline did not process successfully are documented through "residual" `READY_*` files in the `AstraLux_input` directory. In fact, removing `READY_*` files, restarting the pipeline, and creating the corresponding `READY_*` file (e.g. using the command `touch ...`) triggers the pipeline to process the data files again. This is the standard way to run the Astralux pipeline on your home computer.

### 12.4 Reasons and cures for receiver problems

If the file receiver does not acknowledge the start or end of an acquisition with appropriate `ACQSTART` or `ACQEND` message and sounds (not in the NOB), then it is probably stuck in the attempt to retrieve the telescope information for the last cube from the `wt5tcs` NTT telescope control computer.

Before restarting the receiver you should wait until any pending data transfers (check the Data Transfer Monitor window) have been completed. It is better not to start any new acquisitions, but first to solve the receiver problem. The first step is to kill the receiver with a `kill_receiver` command at the `astraoobs` pipeline user's shell prompt. This should close the two receiver windows on the left screen. Now you have to manually copy all raw data files that have been missed by the receiver. On the pipeline machine, go to the directory `/pleione2/AstraLux_input`. Look for the data cubes that belong to the last observation. Copy



them with a `cp` command to the pipeline input path `/disk-b/ASTRALUX/AstraLux_input`. When this is finished, you have to manually trigger the pipeline to process this observation. Go to the input directory `/disk-b/ASTRALUX/AstraLux_input` and create a file with the name `READY_cubename` where `cubename` is the name of the datafile without the `.fits` suffix by using the `touch` command.

Here is an example: if you chose `Trapezium_SDSSi` as filename and requested 10.000 full frames, you would have to copy first the files

`Trapezium_SDSSi.fits`, `Trapezium_SDSSi_X2.fits`, and `Trapezium_SDSSi_X3.fits` to `/disk-b/ASTRALUX/AstraLux_input`

and then to execute the command

```
touch READY_Trapezium_SDSSi
```

in this directory. While the pipeline should now start processing the data, you can restart the receiver with `start_receiver` from the `astraobs` shell prompt.

## 12.5 Data files on `apipe2` have a size of 0 bytes

This can happen, even very, very rarely. If you detect data files on `apipe2` with a file size of 0 bytes, check that the original data file on `pleione2` has the expected correct size and copy it to the `AstraLux_input` directory before you start the backups. For example, `cp /pleione2/AstraLux_input/filename.fits $HOME/AstraLux_input`.

## 13 Using USB hard disks on a pipe2

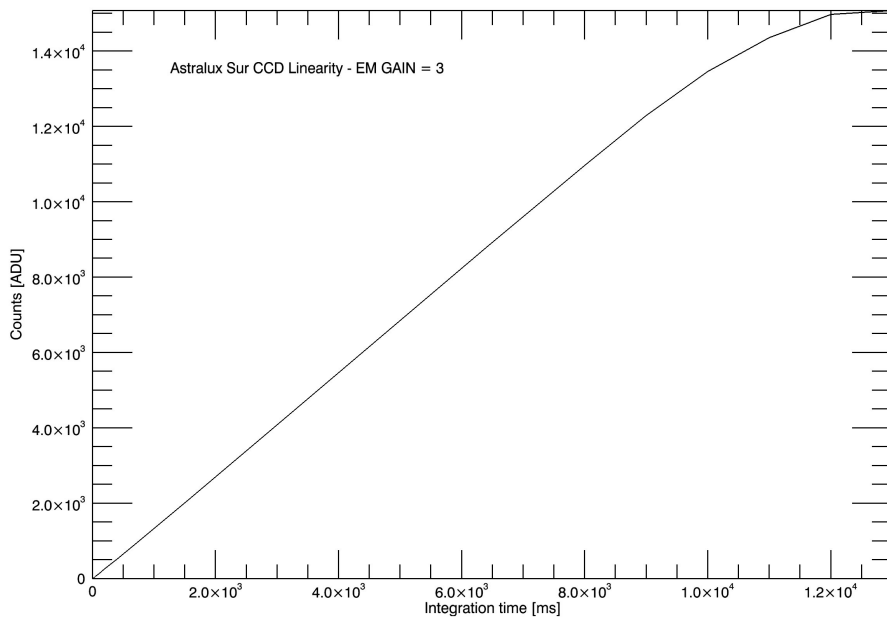
a pipe2 is a Linux system currently (November 2008) running Red Hat Enterprise Linux Client release 5.2 (Tikanga). If the system is running you can just connect USB hard disks to the USB ports on the front or backside of the computer. The disks will then appear on the Desktop and you can access them from the terminal shell. To find their mount point just type `mount` in the terminal shell and spot the name `/media`.

To disconnect any USB hard disk, eject it from the Desktop. Alternatively, you can `umount` the mount point of the USB disk (this might require root privileges). If USB disks are already connected and you reboot the computer remotely, you have to manually mount the USB disks again. This can be done for example with the following commands:

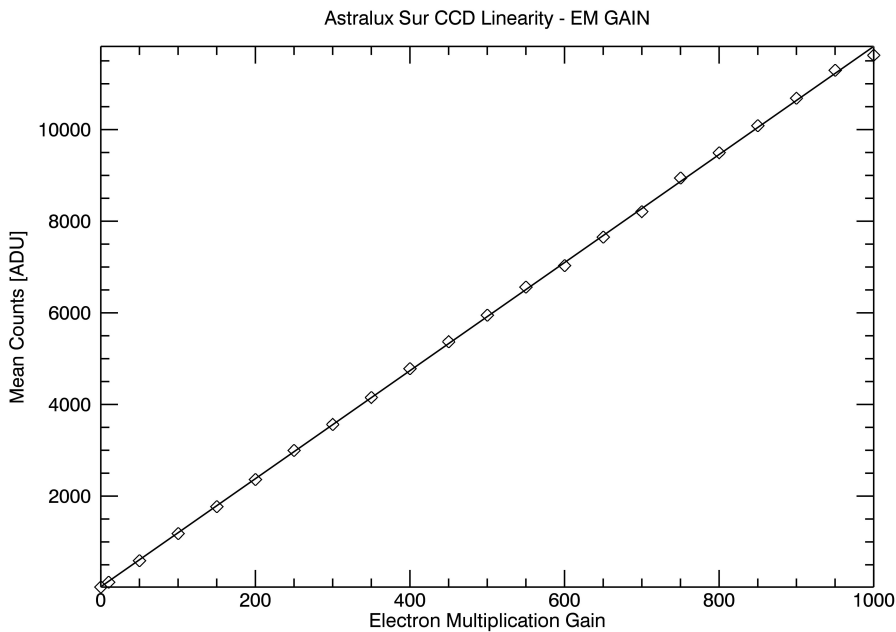
- `mount /dev/sdc1 -o rw,user,umask=0000 /media/usbdisk1` or
- `mount /dev/sdd1 -o rw,user,umask=0000 /media/usbdisk2`.

Again, these commands might require root privileges.

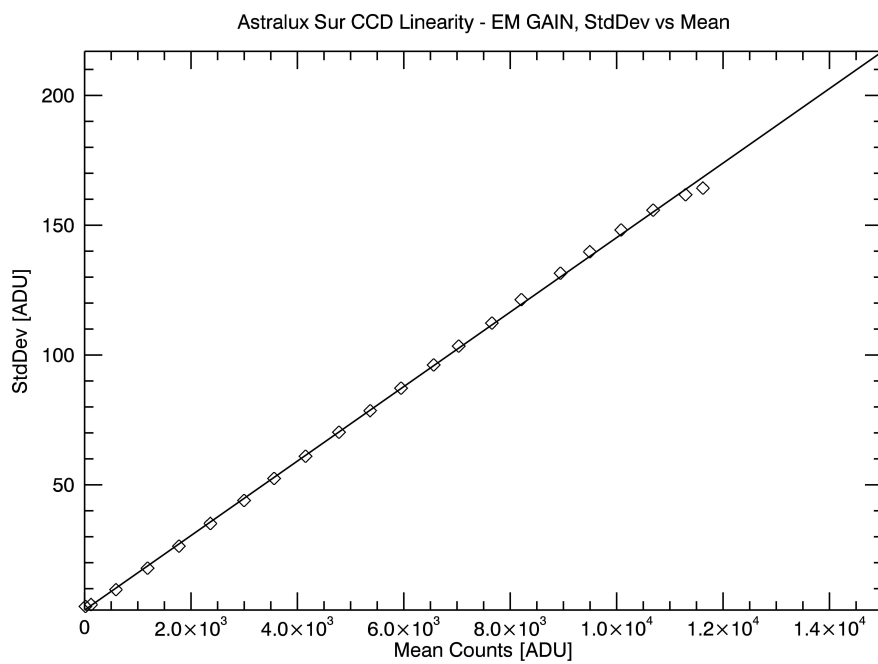
## 14 Astralux Sur EMCCD Linearity Plots



**Figure 13.** *AstraLux Sur CCD Linearity, mean counts vs. integration time for a fixed Electron Multiplication Gain of 3. Temperature: -72.75 degree Celsius. Pre amplifier gain: 5.1.*



**Figure 14.** *AstraLux Sur CCD Linearity as a function of Electron Multiplication Gain. Temperature: -74.05 degree Celsius. Pre amplifier gain: 5.1.*



**Figure 15.** *AstraLux Sur CCD Linearity, standard deviation vs mean counts. At around 11000 counts the camera starts saturating. Temperature: -74.05 degree Celsius. Pre amplifier gain: 5.1.*

## 15 Astralux Sur Graphical User Interfaces Screenshots

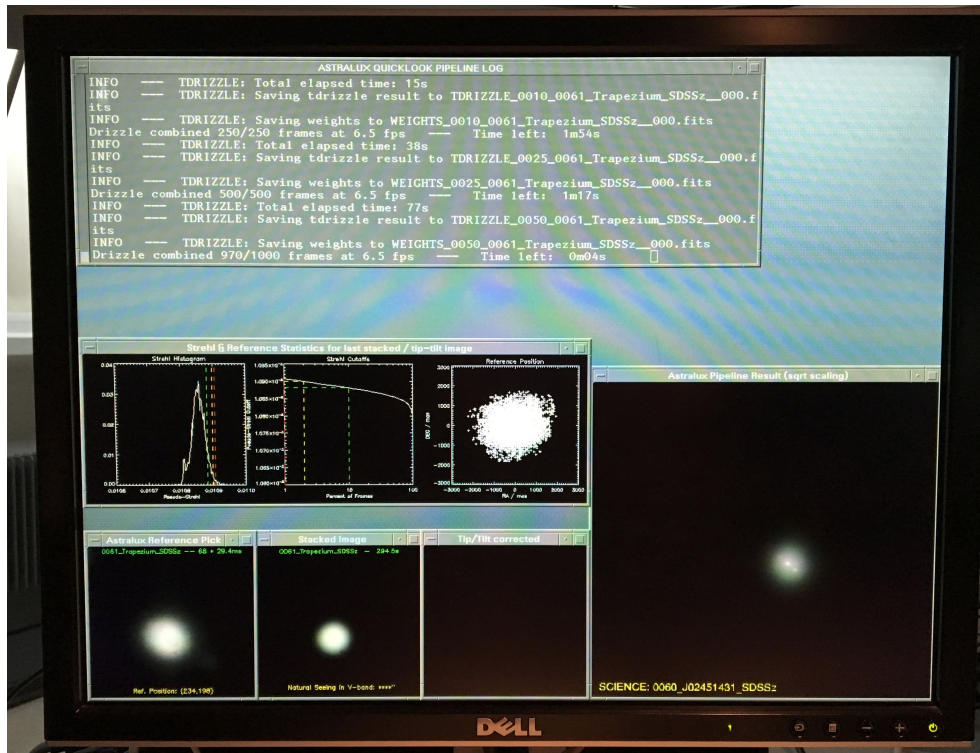


Figure 16. AstraLux Sur pipeline screen layout on the left screen of wg5off in the NOB.

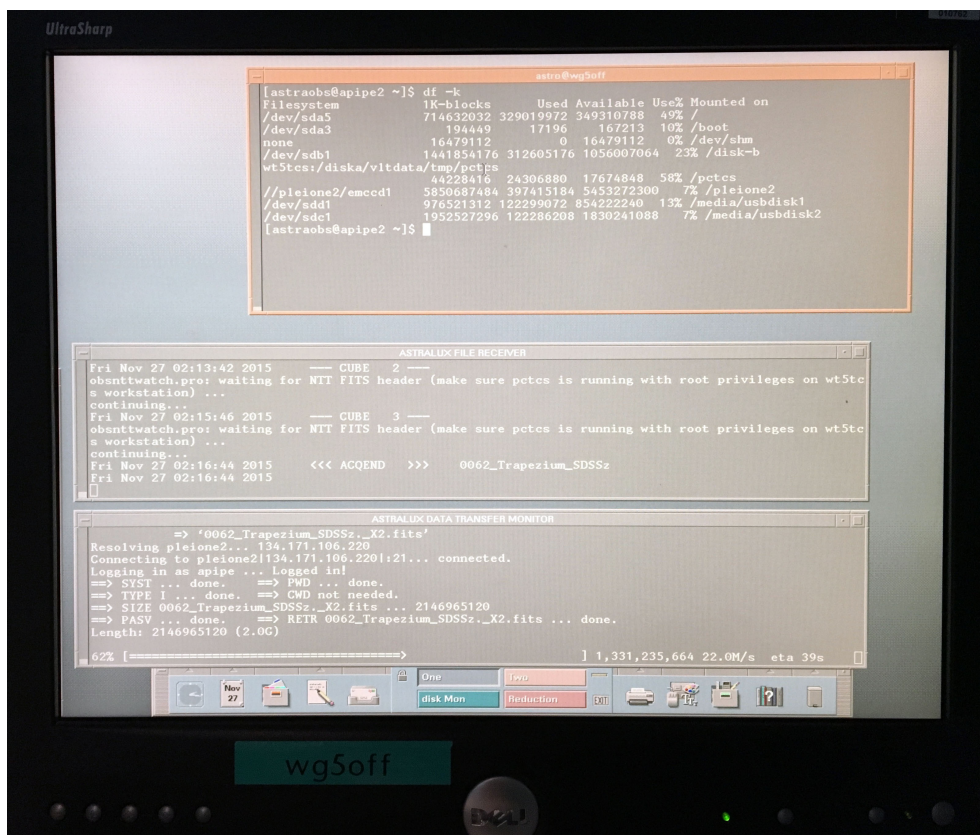


Figure 17. AstraLux Sur pipeline screen layout on the right screen of wg5off in the NOB.

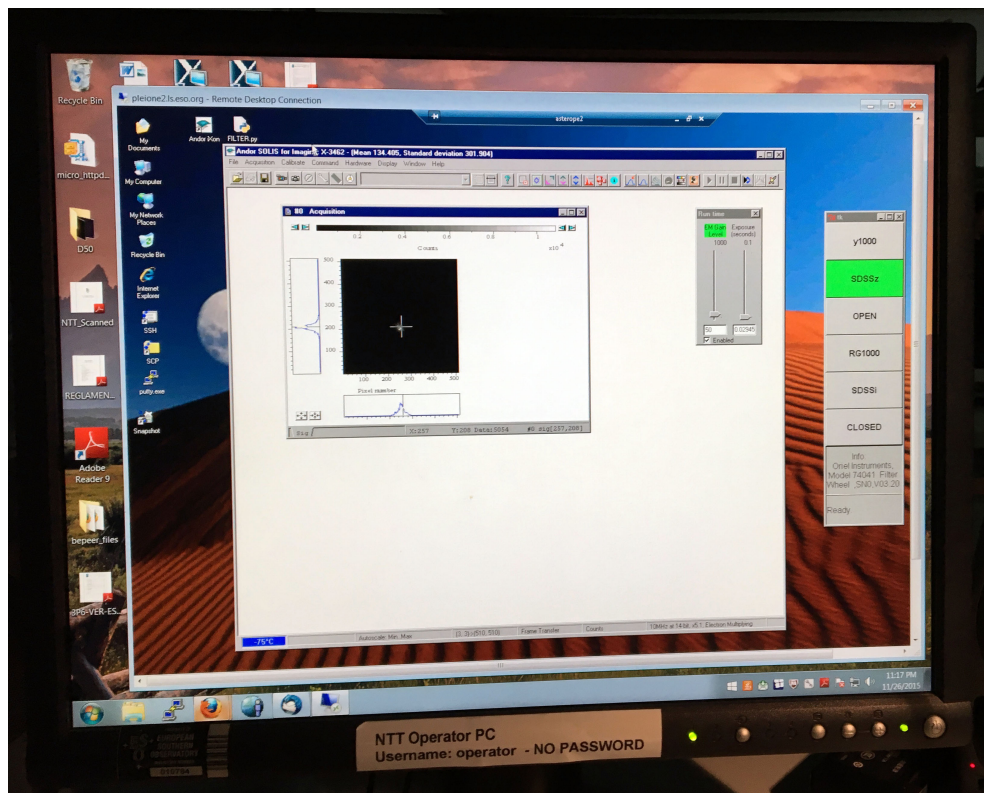
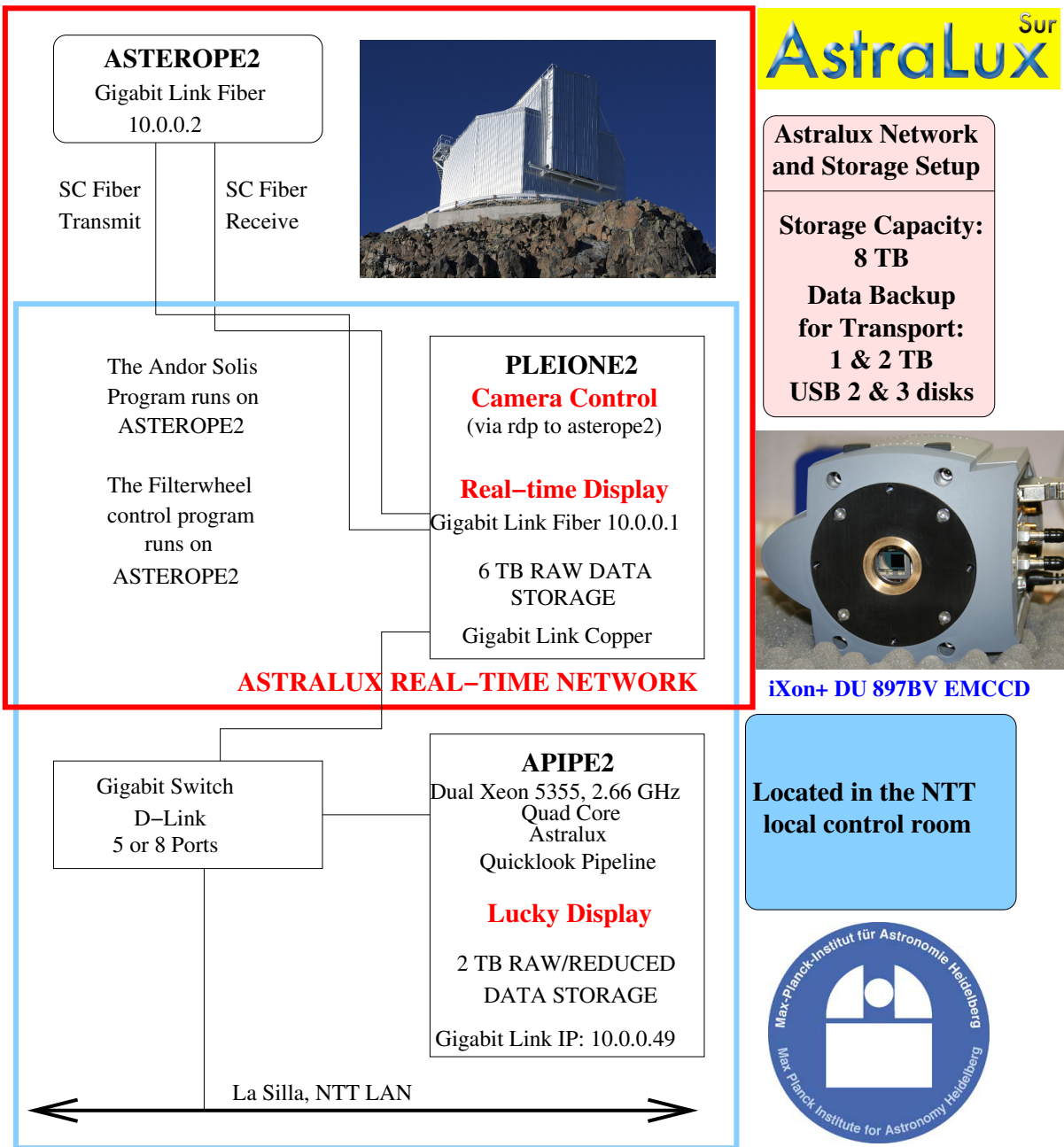


Figure 18. AstrLux Sur camera screen layout on the NTT operator PC in the NOB.



NOB Control Room, NTT station, using 2 monitors of wg5off, and the NTT operator PC

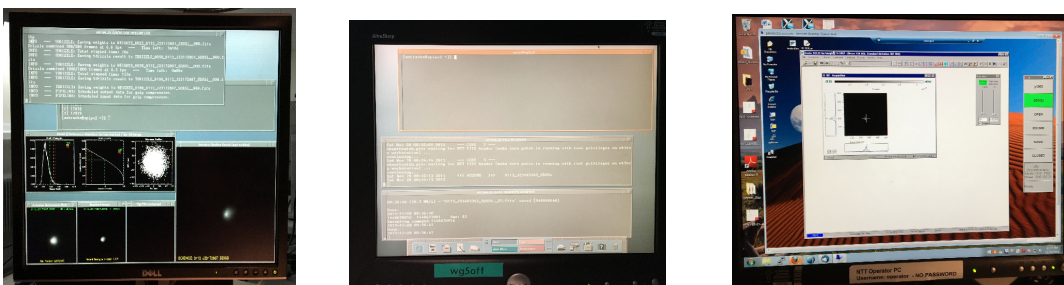


Figure 19. Layout of the current AstraLux Sur network with exclusive fibre connection.